

DATE: 07/29/2019

FILE: 82061.122\_SINGLE\_LAYOUTS.DWG

PROJECT NO: 82061.122

CAD: BEG

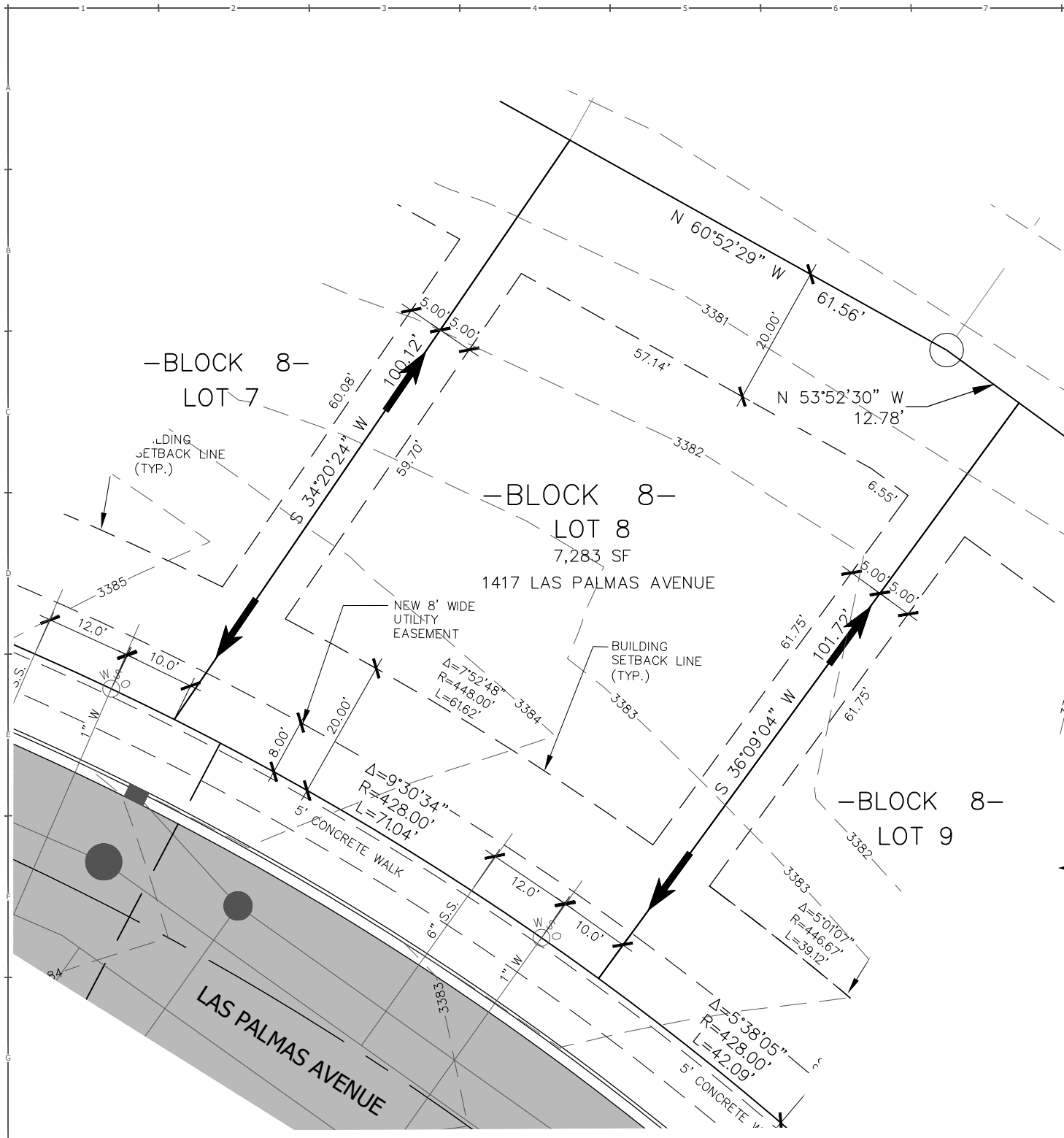
QUALITY ASSURANCE:

REVISIONS	DATE	DESCRIPTION

**NOTE:**

1. ALL DRAINAGE SHALL BE RETAINED ON THE LOT IN ACCORDANCE WITH CITY OF BILLINGS CODE & DIRECTED TOWARD THE PUBLIC RIGHT-OF-WAY UNLESS SPECIFIC DRAINAGE EASEMENTS EXIST.
2. THIS IS AN EXHIBIT INTENDED TO SHOW LOT SETBACKS AND STREET FEATURES AND IS NOT A PLAT OF LEGAL REPRESENTATION OF LOT BOUNDARIES. REFER TO THE FINAL PLAT FOR LEGAL BOUNDARIES.
3. PLAT RECORDING #3888271
4. SIA RECORDING #3888272
5. DRAINAGE EASEMENT DOC #3888276

← = GENERAL DIRECTION OF STORM RUNOFF FROM LOT TO STREET. FINAL GRADING PER BUILDING CODE.



LOT 8, BLOCK 8, HIGH SIERRA SUB., 12TH FILING  
 1417 LAS PALMAS AVENUE  
 BILLINGS, YELLOWSTONE COUNTY, MONTANA  
 HOUSE LAYOUT AND STAKING PLAN