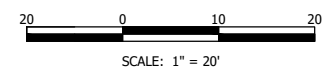
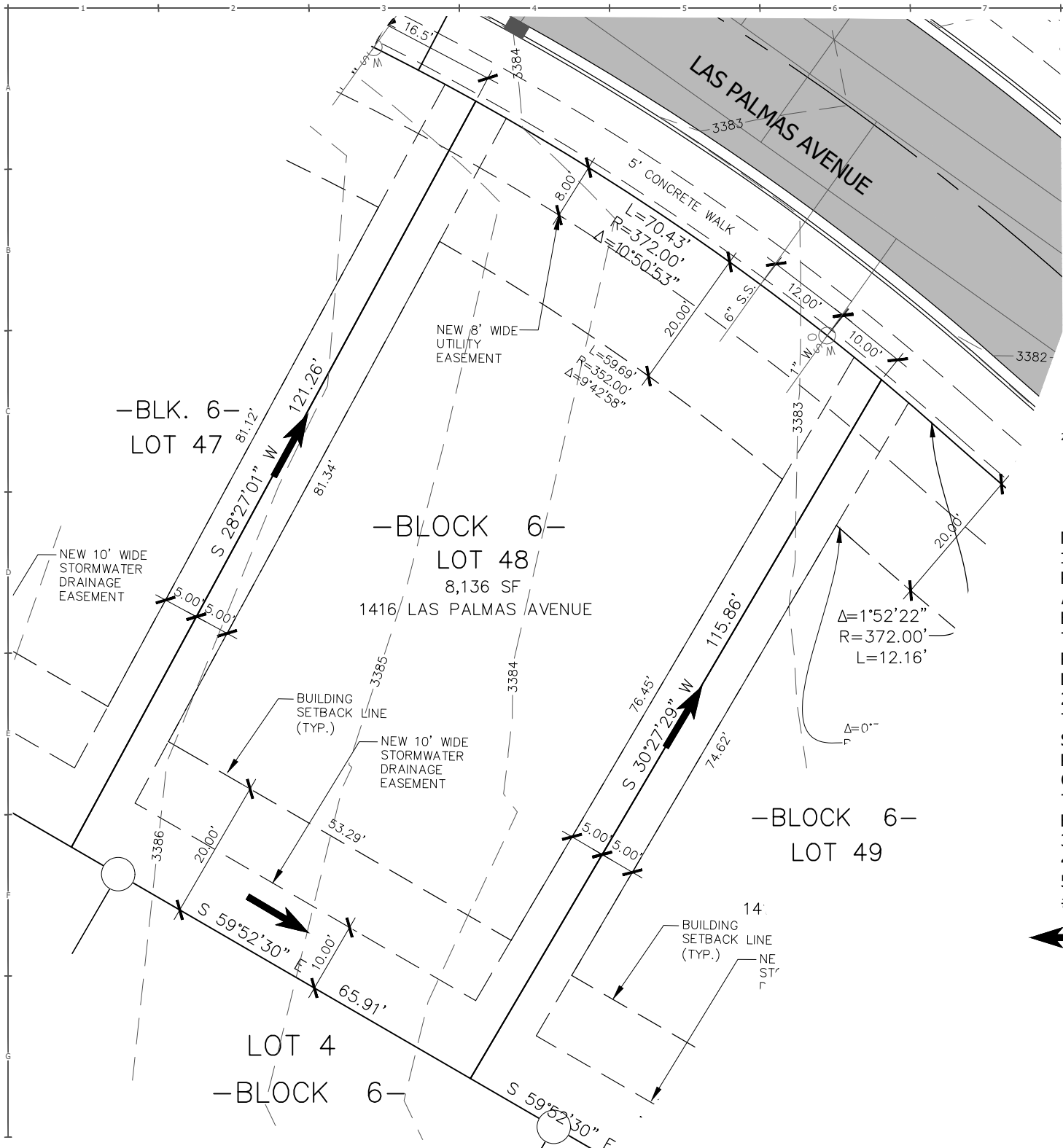


DATE:	07/29/2019
FILE:	82061.122_SINGLE_LAYOUTS.DWG
PROJECT NO:	82061.122
CAD:	BEG
QUALITY ASSURANCE:	
REVISIONS:	
DATE	DESCRIPTION



- NOTE:**
1. ALL DRAINAGE SHALL BE RETAINED ON THE LOT IN ACCORDANCE WITH CITY OF BILLINGS CODE & DIRECTED TOWARD THE PUBLIC RIGHT-OF-WAY UNLESS SPECIFIC DRAINAGE EASEMENTS EXIST.
  2. THIS IS AN EXHIBIT INTENDED TO SHOW LOT SETBACKS AND STREET FEATURES AND IS NOT A PLAT OF LEGAL REPRESENTATION OF LOT BOUNDARIES. REFER TO THE FINAL PLAT FOR LEGAL BOUNDARIES.
  3. PLAT RECORDING #3888271
  4. SIA RECORDING #3888272
  5. DRAINAGE EASEMENT DOC #3888276

= GENERAL DIRECTION OF STORM RUNOFF FROM LOT TO STREET. FINAL GRADING PER BUILDING CODE.



LOT 48, BLOCK 6, HIGH SIERRA SUB., 12TH FILING  
 1416 LAS PALMAS AVENUE  
 BILLINGS, YELLOWSTONE COUNTY, MONTANA  
 HOUSE LAYOUT AND STAKING PLAN