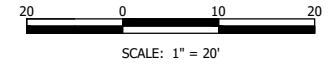


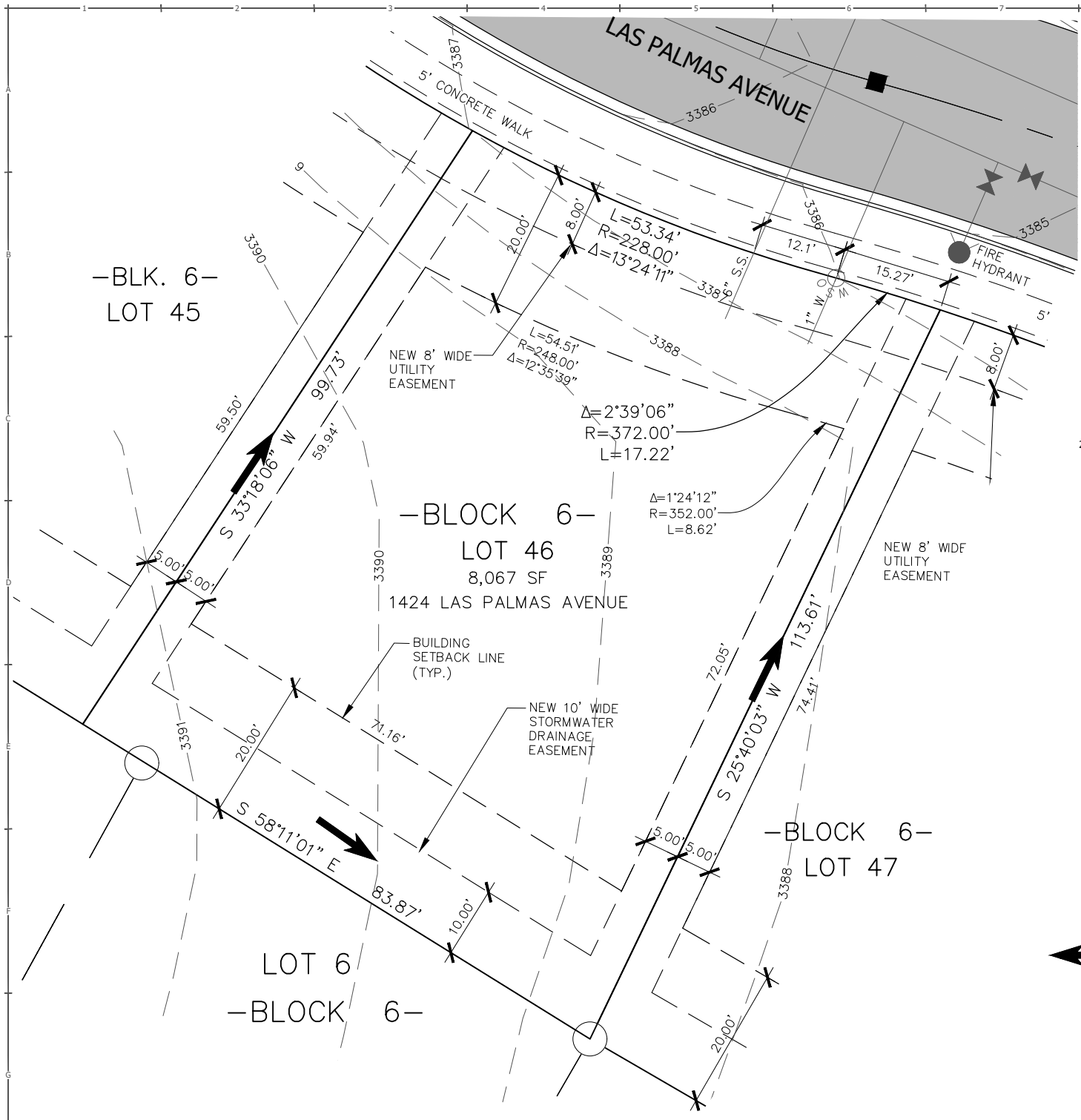
DATE: 07/29/2019
 FILE: 82061.122_SINGLE_LAYOUTS.DWG
 PROJECT NO: 82061.122
 CAD: BEG
 QUALITY ASSURANCE:
 REVISIONS:
 DATE DESCRIPTION

LOT 46, BLOCK 6, HIGH SIERRA SUB., 12TH FILING
 1424 LAS PALMAS AVENUE
 BILLINGS, YELLOWSTONE COUNTY, MONTANA
 HOUSE LAYOUT AND STAKING PLAN



- NOTE:**
1. ALL DRAINAGE SHALL BE RETAINED ON THE LOT IN ACCORDANCE WITH CITY OF BILLINGS CODE & DIRECTED TOWARD THE PUBLIC RIGHT-OF-WAY UNLESS SPECIFIC DRAINAGE EASEMENTS EXIST.
 2. THIS IS AN EXHIBIT INTENDED TO SHOW LOT SETBACKS AND STREET FEATURES AND IS NOT A PLAT OF LEGAL REPRESENTATION OF LOT BOUNDARIES. REFER TO THE FINAL PLAT FOR LEGAL BOUNDARIES.
 3. PLAT RECORDING #3888271
 4. SIA RECORDING #3888272
 5. DRAINAGE EASEMENT DOC #3888276

= GENERAL DIRECTION OF STORM RUNOFF FROM LOT TO STREET. FINAL GRADING PER BUILDING CODE.



-BLK. 6-
 LOT 45

-BLOCK 6-
 LOT 46
 8,067 SF
 1424 LAS PALMAS AVENUE

-BLOCK 6-
 LOT 47

LOT 6
 -BLOCK 6-