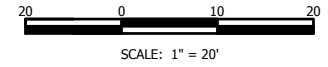
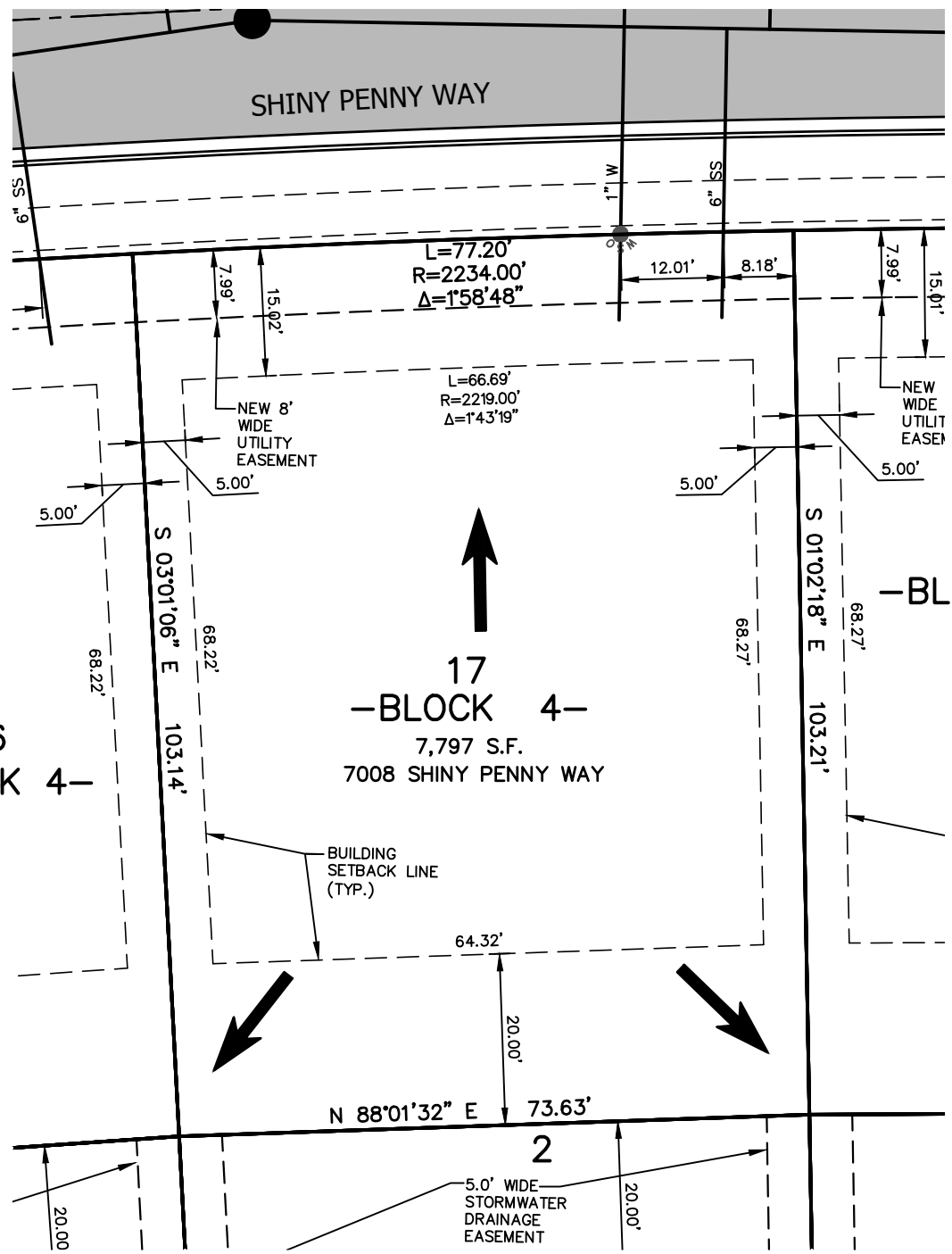


P:\96012_00_HOUSE_LAYOUTS\COPPER RIDGE SEVENTH\16064_03_HOUSE_LAYOUTS.dwg, 10/15/2018 2:24:27 PM, DWG To PDF.pc3



NOTE:

1. ALL DRAINAGE SHALL BE RETAINED ON THE LOT IN ACCORDANCE WITH CITY OF BILLINGS CODE & DIRECTED TOWARD THE PUBLIC RIGHT-OF-WAY UNLESS SPECIFIC DRAINAGE EASEMENTS EXIST.
2. THIS IS AN EXHIBIT INTENDED TO SHOW LOT SETBACKS AND STREET FEATURES AND IS NOT A PLAT OF LEGAL REPRESENTATION OF LOT BOUNDARIES. REFER TO THE FINAL PLAT FOR LEGAL BOUNDARIES.

= GENERAL DIRECTION OF STORM RUNOFF FROM LOT TO STREET. FINAL GRADING PER BUILDING CODE.

DATE:	10/15/2018
FILE:	16064_03_HOUSE_LAYOUTS.DWG
PROJECT NO:	16064.03
CAD:	BEG
QUALITY ASSURANCE:	BEG
REVISIONS:	
DATE	DESCRIPTION

LOT 17, BLOCK 4, COPPER RIDGE SUBDIVISION, SEVENTH FILING
7008 SHINY PENNY WAY
BILLINGS, YELLOWSTONE COUNTY, MONTANA
HOUSE LAYOUT AND STAKING PLAN