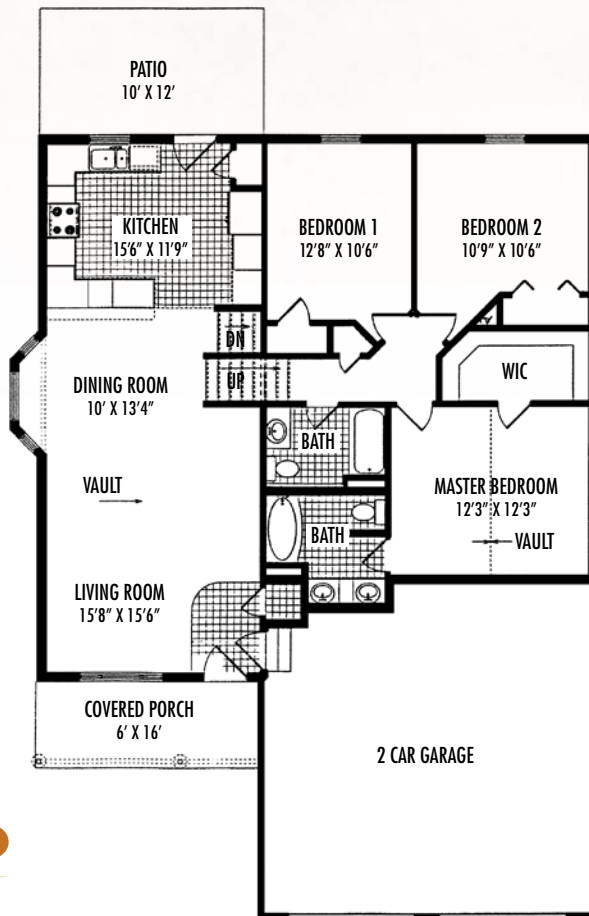




RED RIDGE

at

Copper Ridge



MAIN FLOOR 1399 SQ. FT.
 LOWER LEVEL 765 SQ. FT.

Renderings are artist's conception and subject to change. All square footages are approximate.

Standard Features

- Main floor 1,399 sq. ft., lower level 765 sq. ft.
- Master Suite with dual sinks, mirrors, and walk-in closet
- Bright, open kitchen with bar & walk- pantry
- 4 bedrooms/2 ¾ baths/utility room/basement hallway
- 2 X 6 walls with OSB sheathing and Tyvex house wrap
- Silent floor joist system
- White porcelain guest bath sinks
- Brushed chrome light fixtures and door hardware
- 8 foot ceilings
- Garbage disposal
- 2 car garage
- Solid insulated raised panel metal garage door with automatic opener & remotes
- Concrete patio off kitchen
- Single 3'0" glass door to patio
- Concrete driveway and sidewalks
- Metal rain gutters
- 40 gallon gas hot water heater
- Gas forced air furnace
- Rock accents on front corners of garage
- Mannington Select vinyl flooring in designated areas



Oakland's Distinctive Features

Oakland features included in base price, generally not found in this price range:

- Large maintenance-free single hung vinyl windows with grids
- Oak or Hickory custom cabinets
- Decorative gable shakes
- Vaulted ceiling in living room and master bedroom
- Interior walls & trim with choice of premium Sherwin Williams colors
- FHA approved 45 oz. carpet
- Premium Hardiboard siding
- Therma Tru Fiberglass front door
- Architectural grade 30 year asphalt shingles
- Decorative bath vanity lights, dining room chandelier, and ceiling fan in living room and master bedroom
- Covered front porch
- Smooth top range, dishwasher & self-venting microwave



Available Upgrade Options*

- Bullnose corners
- Insulate/sheetrock/tape & texture/paint garage
- Central Air Conditioning
- Textured & painted window jams with wood sills
- UGSP and landscape package
- Decorative trim moldings (6 ¼" base trim, 2 ¼" door trim)
- Side by side refrigerator
- Solid surface countertops with molded Kitchen & Master Bath sinks
- Pre-wired for security
- Decorative window in garage door
- Deluxe front door
- Deluxe light fixtures and door hardware
- Appliance package – Stainless Steel
- Redwood deck or maintenance-free decking in place of concrete patio
- Hardwood flooring
- Ceramic flooring
- Scraped wood flooring
- Optional carpet package
- Gas fireplace

**See your sales representative for pricing and cost*



6652 Cove Creek Parkway
Billings, Montana 59106
406-256-3067 Phone
406-254-1955 Fax
www.oaklandcompanies.com

RED RIDGE
at
Copper Ridge



All information in this b

and draperies, mirrors, paneling, wall hangings, as well as furnishings and decorator items are for display only. Certain items may be available as options. All of the models depicted in this brochure are artist's renderings. All square footages are approximate. Please right to change prices, terms, upgrades, concessions, and product or design without further notice or obligation.

, custom paint colors, custom flooring