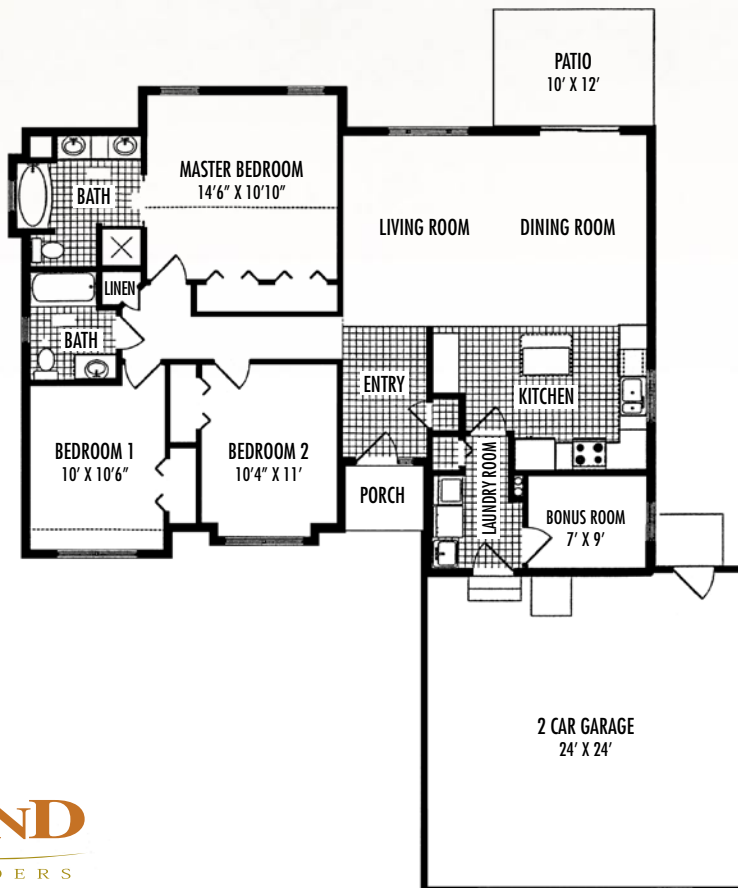




PINE RIDGE

at

Copper Ridge



MAIN FLOOR 1520 SQ. FT.

Renderings are artist's conception and subject to change. All square footages are approximate.

Standard Features

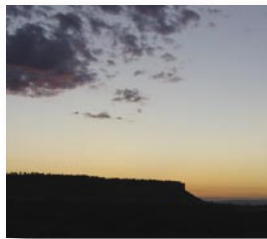
- Main floor 1,520 square feet
- Master Suite with privacy area stool, separate shower stall, soaking tub, dual sinks, mirrors, and his/her closet
- Bright, open kitchen with island & cabinet pantry
- 3 bedrooms/2 full baths/ bonus room
- 2 X 6 walls with OSB sheathing and Tyvek house wrap
- Silent floor joist system
- White porcelain guest bath sinks
- Brushed chrome light fixtures and door hardware
- 8 foot ceilings
- Garbage disposal
- 2 car garage – 563 square feet
- Solid insulated raised panel metal garage door with automatic opener & remotes
- Concrete patio off dining room
- Sliding glass door to patio
- Concrete driveway and sidewalks
- Metal rain gutters
- 50 gallon electric hot water heater
- Gas forced air furnace
- Rock accents on front corners of garage
- Mannington Select vinyl flooring in designated areas



Oakland's Distinctive Features

Oakland features included in base price, generally not found in this price range:

- Large maintenance-free single hung vinyl windows with grids
- Oak or Hickory custom cabinets
- Decorative gable shakes
- Vaulted ceiling in living room and master bedroom
- Deluxe light fixtures and door hardware
- Interior walls & trim with choice of premium Sherwin Williams colors
- FHA approved 45 oz. carpet
- Premium Hardiboard siding
- Therma Tru Fiberglass front door with sidelight
- Architectural grade 30 year asphalt shingles
- Decorative bath vanity lights, dining room chandelier, and ceiling fan in living room and master bedroom
- Smooth top range, dishwasher & self-venting microwave



Available Upgrade Options*

- Finished or unfinished basement
- Bullnose corners on interior walls
- Solid surface counter tops with molded Kitchen & Master bath sinks
- Insulate/sheetrock/tape & texture/paint garage
- Central Air Conditioning
- Textured & painted window jams with wood sills
- UGSP and landscape package
- Decorative trim moldings (6 1/4" base trim, 2 1/4" door trim)
- Side by side refrigerator
- Pre-wired for security
- Decorative window in garage door
- Gas fireplace
- Deluxe light fixture and door hardware
- French doors to deck/patio
- Redwood deck or maintenance-free decking in place of concrete patio
- Hardwood flooring
- Ceramic flooring
- Scraped wood flooring
- Optional carpet package
- Deluxe front door

*See your sales representative for pricing and cost



6652 Cove Creek Parkway
Billings, Montana 59106
406-256-3067 Phone
406-254-1955 Fax
www.oaklandcompanies.com



PINE RIDGE
at
Copper Ridge

All information in this b

and draperies, mirrors, paneling, wall hangings, as well as furnishings and decorator items are for display only. Certain items may be available as options. All of the models depicted in this brochure are artist's renderings. All square footages are approximate. Please right to change prices, terms, upgrades, concessions, and product or design without further notice or obligation.

, custom paint colors, custom flooring