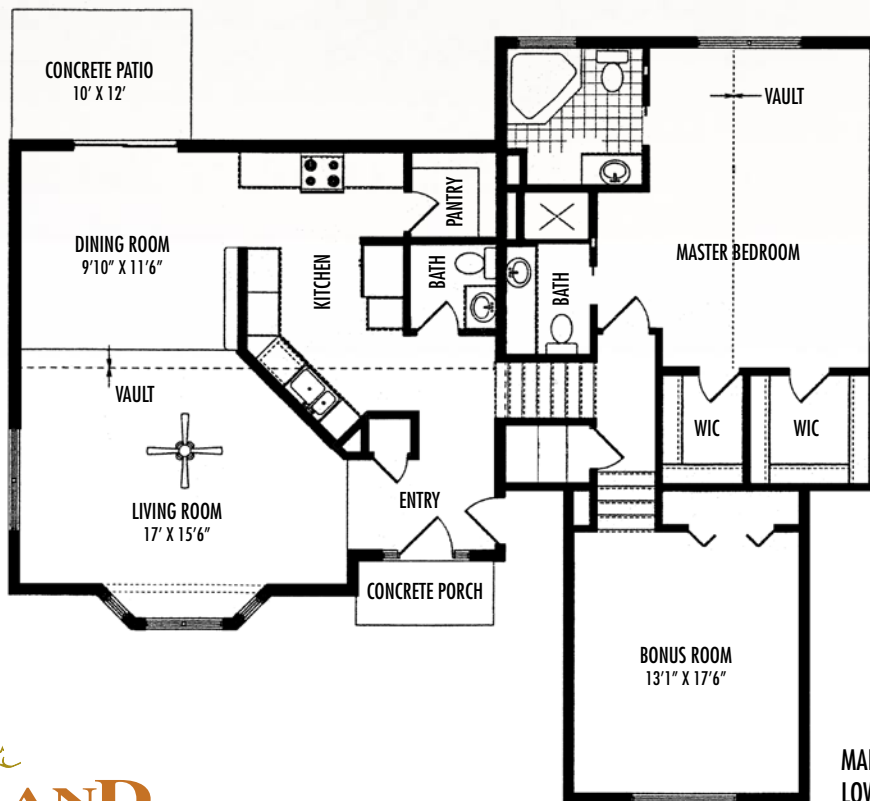




# COTTON RIDGE

at

## Copper Ridge



MAIN FLOOR 1529 SQ. FT.  
LOWER LEVEL 1288 SQ. FT.



Renderings are artist's conception and subject to change. All square footages are approximate.

## Standard Features

- Main floor 1,529 sq. ft., lower level 1,288 sq. ft.
- Bright, open common area with ½ bath on main level
- Bonus room over garage or large bedroom
- Master Bedroom with his & hers walk-in closets
- Bright, open kitchen with raised bar & walk-in pantry
- 5 bedrooms/4 ½ baths/utility room/basement hallway
- 2 X 6 walls with OSB sheathing and Tyvex house wrap
- Silent floor joist system
- White porcelain guest bath sinks
- Brushed chrome light fixtures and door hardware
- 8 foot ceilings
- Garbage disposal
- 2 car garage
- Solid insulated raised panel metal garage door with automatic opener & remotes
- Concrete patio off dining room
- Sliding glass patio door
- Concrete driveway and sidewalks
- Metal rain gutters
- 40 gallon gas hot water heater
- Gas forced air furnace
- Rock accents on front corners of garage
- Mannington Select vinyl flooring in designated areas

## Oakland's Distinctive Features

Oakland features included in base price, generally not found in this price range:

- Large maintenance-free single hung vinyl windows with grids
- Oak or Hickory custom cabinets
- Decorative gable shakes
- Vaulted ceiling in living room and master bedroom
- Interior walls & trim with choice of premium Sherwin Williams colors
- FHA approved 45 oz. carpet
- Premium Hardiboard siding
- Therma Tru Fiberglass front door with sidelight
- Architectural grade 30 year asphalt shingles
- Decorative bath vanity lights, dining room chandelier, and ceiling fan in living room and master bedroom
- Master Suite
- His and Hers master baths
- Smooth top range, dishwasher & self-venting microwave



## COTTON RIDGE at Copper Ridge

All information in this b

and draperies, mirrors, paneling, wall hangings, as well as furnishings and decorator items are for display only. Certain items may be available as options. All of the models depicted in this brochure are artist's renderings. All square footages are approximate. Please right to change prices, terms, upgrades, concessions, and product or design without further notice or obligation.

## Available Upgrade Options\*

- Additional lower level (finished or unfinished)
- Bullnose corners
- Insulate/sheetrock/tape & texture/paint garage
- Central Air Conditioning
- Textured & painted window jams with wood sills
- UGSP and landscape package
- Side by side refrigerator
- Solid surface countertops with molded Kitchen & Master Bath sinks
- Pre-wired for security
- Decorative trim moldings (6 ¼" base trim, 2 ¼" door trim)
- Decorative window in garage door
- Deluxe light fixtures and door hardware
- Appliance package – Stainless Steel
- French doors to deck/patio
- Redwood deck or maintenance-free decking in place of concrete patio
- Hardwood flooring
- Ceramic flooring
- Scraped wood flooring
- Optional carpet package
- Deluxe front door
- Gas fireplace

\*See your sales representative for pricing and cost



6652 Cove Creek Parkway  
Billings, Montana 59106  
406-256-3067 Phone  
406-254-1955 Fax

[www.oaklandcompanies.com](http://www.oaklandcompanies.com)



, custom paint colors, custom flooring